



# ABECEDAIRE



LES  
**TIBIDOUS**

LES DODOUS CANAILLES



A a A a



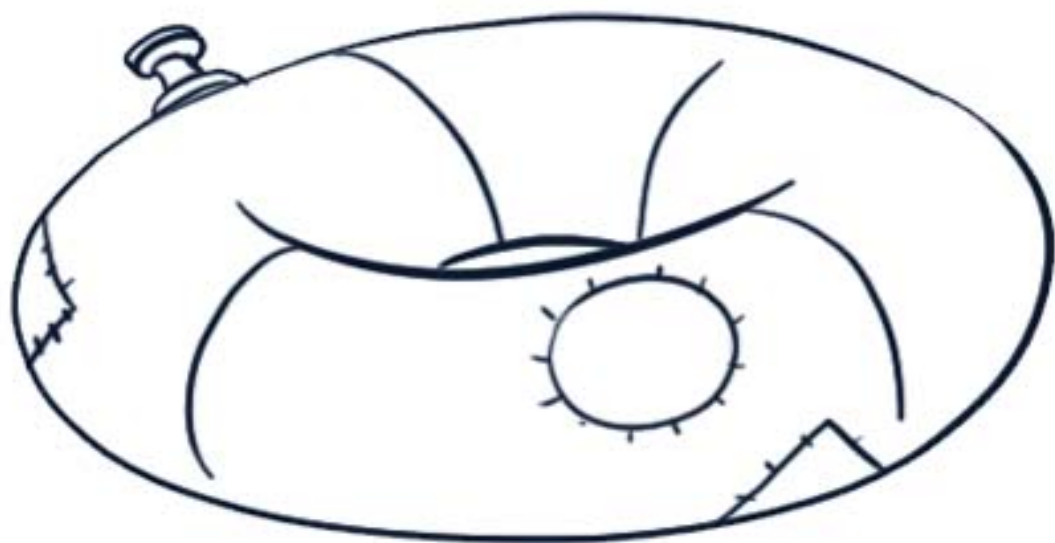
ABEILLE

abeille

abeille



B b B b



BOUÉE

bouée

bouée



C c Cerise



CERISE

cerise

*cerise*



D d D d



DÉ

dé

dé



E e E e



ÉCHARPE

écharpe

écharpe



F f F f



FLEUR

fleur

fleur



G g G g



GIRAFE

girafe

girafe

H h H h



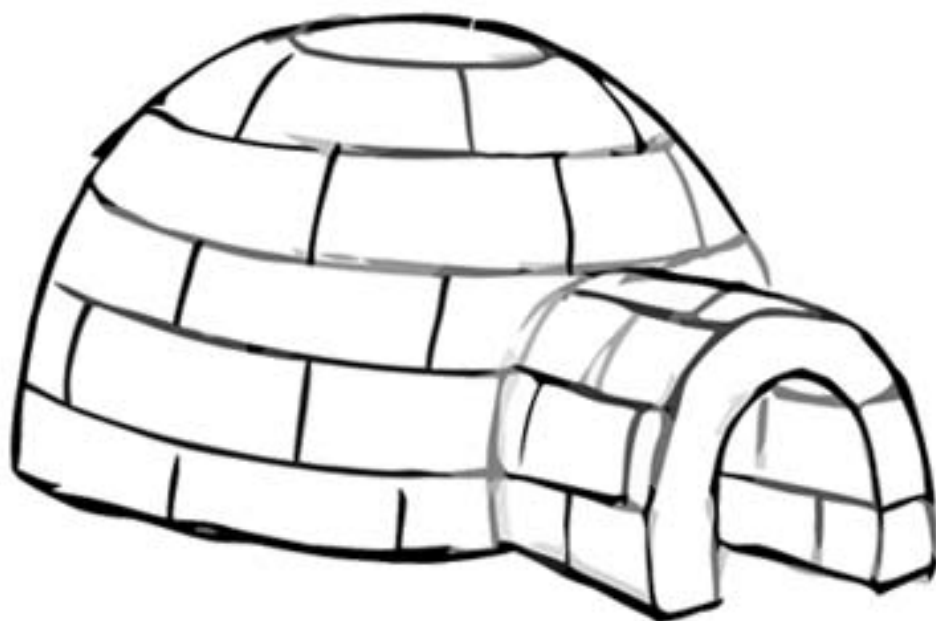
HIVER

hiver

hiver



I i I i



IGLOO

igloo

igloo

J j J j



JOURNAL

journal

journal



K k K k



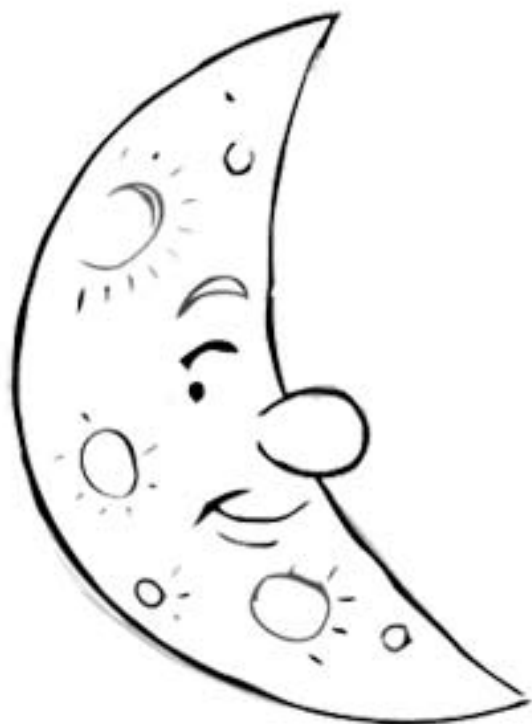
KANGOUROU

kangourou

kangourou



L l L l



LUNE

lune

lune



M m Ma m



MAISON

maison

maison

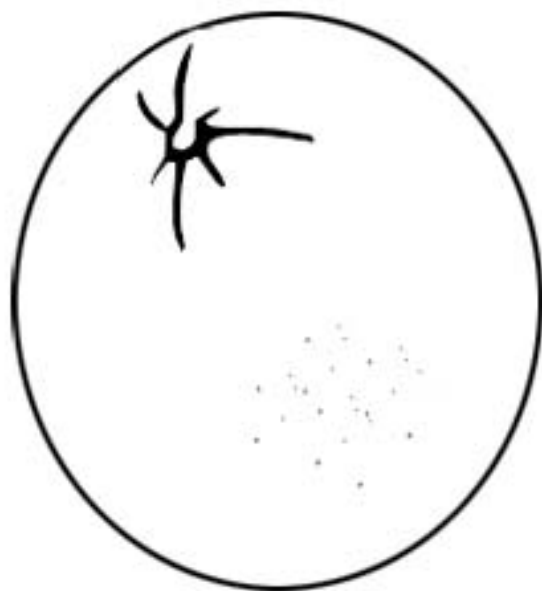
N n N n



NOËL

noël

noël



ORANGE

orange

orange



P p P p



POISSON

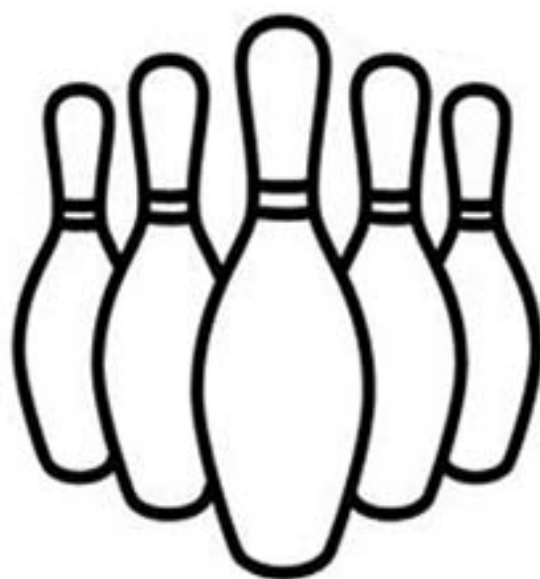
poisson

poisson



Q q

Quille quille



QUILLE

quille

quille



R r Raisin r



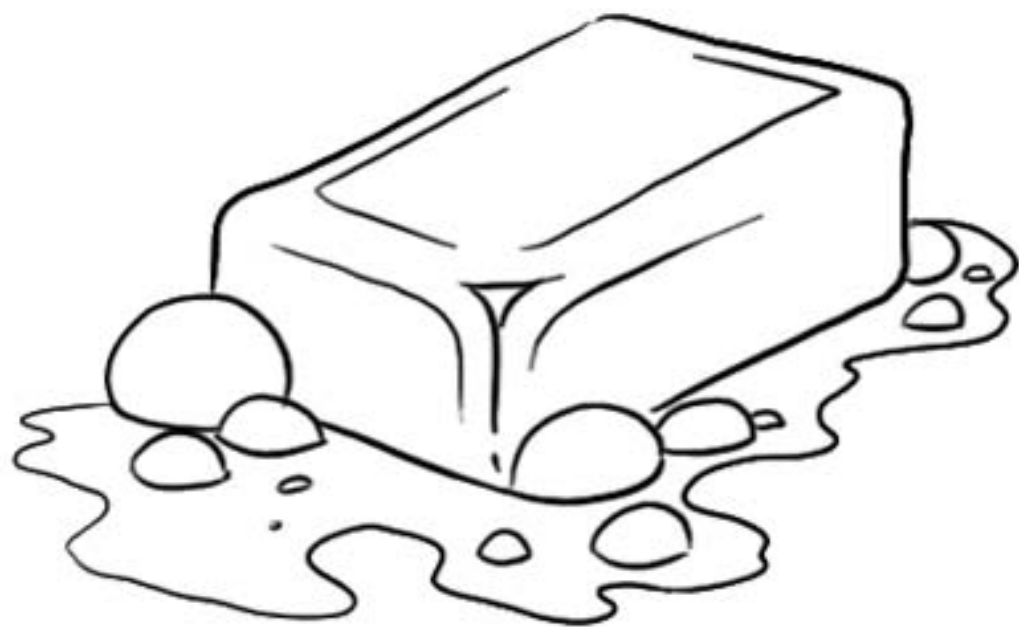
RAISIN

raisin

raisin



S s S s



SAVON

savon

savon



T t Tambour t



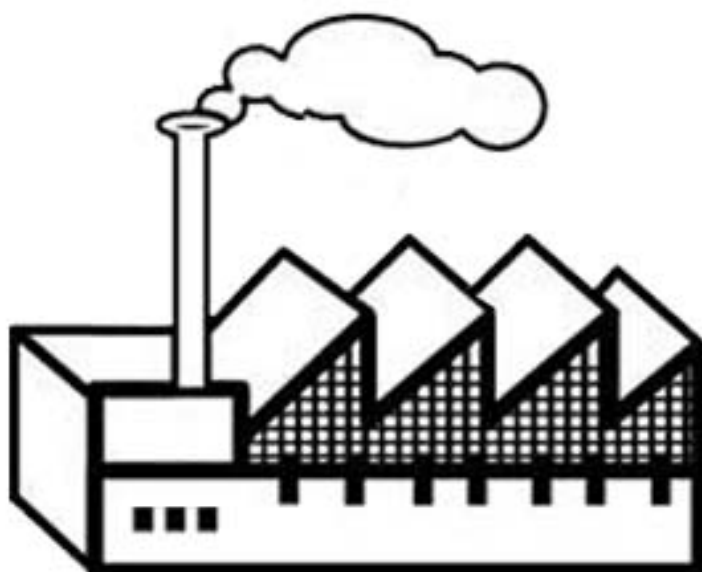
TAMBOUR

tambour

tambour



U u U u



USINE

usine

*usine*



V v V v



VOITURE

voiture

voiture

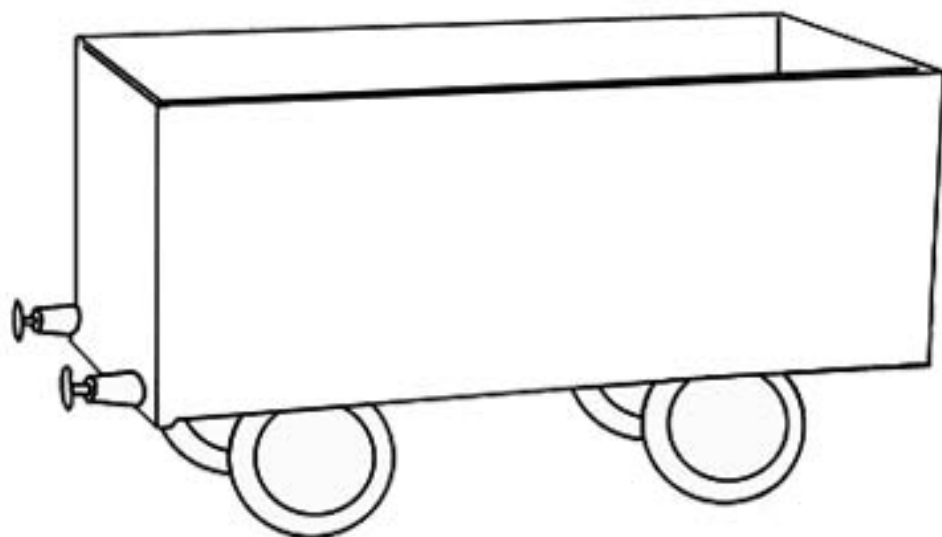


W

w

W

w



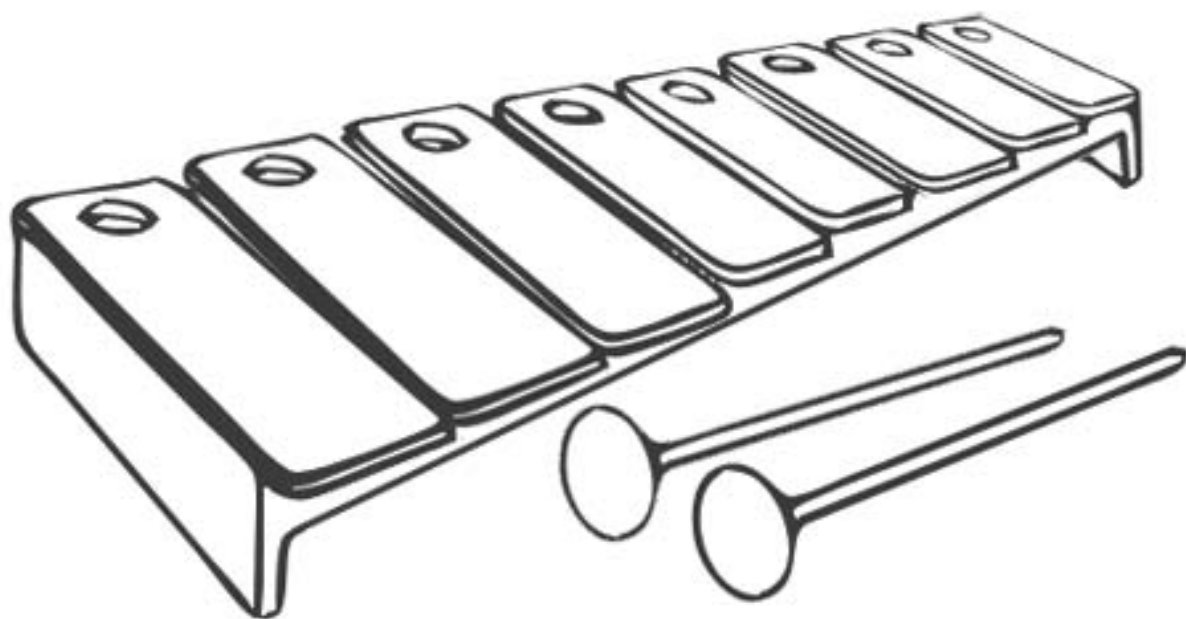
WAGON

wagon

wagon



X x X x



XYLOPHONE

xylophone

xylophone



Y y Y y



YAOURT

yaourt

yaourt



Z z Z z



ZÈBRE

zèbre

zèbre